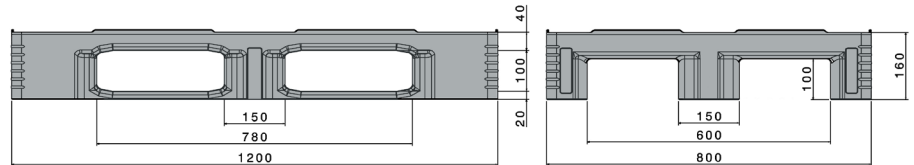









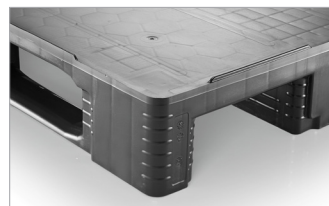
# TC1 ECO

1200 x 800 mm



Art. no. 87065201

Technical data <sup>*1</sup>			
Dimensions L x W x H (mm)	1200 x 800 x 160		
Weight (kg)	18.0		
Material <sup>*2</sup>	HDPE, Regranulated material		
Load capacity (kg) <sup>*3</sup>	 <b>Static</b> 7500	 <b>Dynamic</b> 1250	 <b>In racking system</b> 1000
Characteristics	Options		
Colour: black Runners: 3, unwelded Rims: 7 mm Temperature stability: -30 °C to +40 °C, briefly up to +90 °C Manufactured from regranulated material of one single type	Transponder Reinforcement profiles Rim options		
Loading quantities (pcs/approx.)			
 <b>Container</b>	Container 20': <b>192</b> Container 40': <b>390</b>	Container 40' High Cube: <b>440</b> Conventional trailer 45' high cube container: <b>510</b>	
 <b>Truck</b>	MEGA-Trailer: <b>612</b>	Jumbo: <b>684</b>	
Labelling options			
Customised printing and numbering available on request depending on quantity. Position upon consultation.			



<sup>\*1</sup> All technical data include characteristic features, which have been tested under specially defined conditions. Varying data may result from different conditions of usage such as loading method, prevailing temperature and length of storage time. All data and specified information are subject to change without notice. Our service team is pleased to be at your disposal to check the special requirements of your individual application.

<sup>\*2</sup> Our service team is pleased to be at your disposal if you require exact information about material compositions.

<sup>\*3</sup> **Static load:** resistance to pressure on a flat ground surface and an evenly distributed load at a room temperature of approx. 20 °C.

**Dynamic load:** on a forklift with an evenly distributed load at a room temperature of approx. 20 °C.

**In racking system:** evenly distributed load (sacks) along the longitudinal sides. Resting on two supports for over 100 h at a room temperature of approx. 20°C.