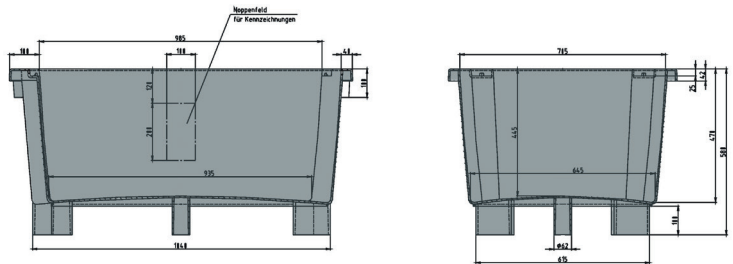




Large containers

300 l



Art. no. 81181815

Technical data *1

External Dimensions L x W x H (mm) 1200 x 780 x 580

Internal Dimensions L x W x H (mm) 985 x 706 x 470

Weight (kg) 17.7


Volume (l) 300

Material HDPE

Load capacity (kg)  **Holding Capacity**
250

 **Extra Load**
785

Stacking height (mm)  **When nested**
140

 **When stacked**
550

Characteristics

- Colour: light grey
- 5 feet
- Nestable, stackable
- For temperatures ranging from -30 °C to +40 °C, briefly up to +90 °C
- Resistant to most chemicals and cleaning agents
- Accessible with forklift and lift truck
- Food-safe. HACCP compliant

Options

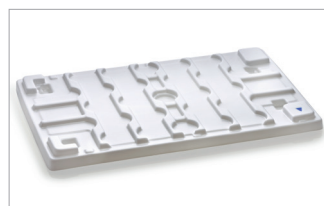
Lid

Loading quantities (pcs/approx.)

On request.

Labelling options

Customised printing and numbering available on request depending on quantity. Position upon consultation.



*1 All technical data include characteristic features, which have been tested under specially defined conditions. Varying data may result from different conditions of usage such as loading method, prevailing temperature and length of storage time. All data and specified information are subject to change without notice. Our service team is pleased to be at your disposal to check the special requirements of your individual application.